

# KWH Meter & Panel Meter & Multimeter & Temperature Controller Thermocouple & Small Thermostat



DIN-rail KWH Meter.....	65-66	JDZ9-6,10 Type Voltage Transformer.....	91
DDS1375 Single Phase Electronic Energy Meter.....	67	JDZX9-6,10 Type Voltage Transformer.....	92
DTS1375,DSS1375 Three Phase Electronic Energy Meter.....	67	JDZ10-10 Type Voltage Transformer(Same RZL-10).....	93
Single Phase Electronic Prepaid Energy Meter.....	68	JDZX10-10 Type Voltage Transformer(Same REL-10).....	94
Three Phase Electronic Prepayment Energy Meter.....	68	JDZ9-35Q,JDZX9-35G Type Voltage Transformer.....	95
DD28,DD862,DT862,KWH Meter.....	69	JDZX9-35(W) Type Voltage Transformer.....	96
Panel Meter.....	70-71	JDZXW-35 Type Voltage Transformer.....	97
Digital Panel Meter.....	72	JDZW-35 Voltage Transformer.....	98
Model FL-2 Current Shunt.....	73	JLS-6,10,35 Type Outdoor Combined Transformer.....	99
Model FL-21 Current Shunt.....	74	JLS4-6,10,35 Type Outdoor Combined Transformer.....	100
MSQ Current Transformers.....	75-76	JLSZV-6,10(W) Type Outdoor Combined Transformer.....	101
MR Current Transformers.....	77	JDZ12A-6,10R Type Voltage Transformer.....	102
RCT Current Transformers.....	78	JSZV12A-3,6,10R Type Voltage Transformer.....	103
DP Current Transformers.....	79-80	Digital Clamp Meter.....	104-105
LZZBJ9-10 Type Current Transformer.....	81-82	Others.....	106-107
LZZBJ9-12 Type Current Transformer.....	83-84	Temperature Controller.....	108-109
LZZBJ9-36/250W1G1 Type Current Transformer.....	85	Thermocouple and Thermal Resistance.....	110
LZZBJ71-12,27.5,35 Type Outdoor Current Transformer.....	86	PTC Heater 15-150W HG140.....	111
JDZ,JDZJ-6,10 Type Voltage Transformer.....	87-88	Small PTC Heater.....	112
JDZC-6,10 Series Voltage Transformer.....	89-90	Small Thermostat KT011.....	113

## DIN-rail KWH Meter

### 1. Applications

ADM is a kind of single phase electronic Din rail watt-hour meter. It completely accords with relevant technical requirements of class 1 and class 2. It can accurately and directly measure active energy consumption. It can also display total energy consumption by analog type impulse register or LCD display. This watt-hour meter is according to EN62053-21.



ADM25SC



ADM25SCR



ADM65SC



ADM65SCR

Conform to EN62053-21 Accuracy	Class 1, 2
Frequency	50/60Hz
Single phase	120V or 230V
Rated impulse voltage	Uimp 6KV-1.2/50S
Power consumption	≤1.5W/6VA per phase
Temperature range	-10°C - +50°C

### 2. Specification

Type	Rating	Voltage	Class	Designation
ADM25S ADM25SC(LCD) ADM25SCR(RS485)	2.5(10)A 5(20)A 5(25)A 5(30)A	AC120V or 230V	1.0/2.0	Single Phase 1 module
ADM65S ADM65SC(LCD) ADM65SCR(RS485)	5(32)A 10(40)A 10(50)A 15(60)A 20(100)A	AC120V or 230V	1.0/2.0	Single Phase 2 module
ADM100S ADM100SC(LCD) ADM100SCR(RS485) ADM100SCF(Multi-Rate) ADMSCY(Prepaid)	5(30)A 10(60)A 15(90)A 20(100)A	AC120V or 230V	1.0/2.0	Single Phase 4 module



ADM100S



ADM100SC

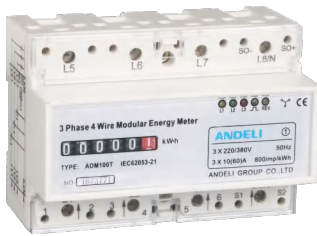


ADM100SCR

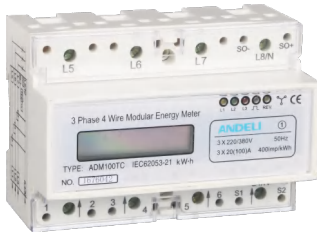
## DIN-rail KWH Meter

### 1. Applications

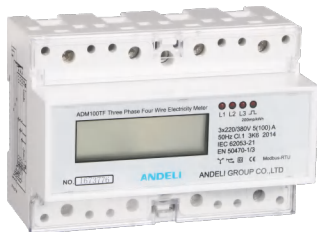
ADM is a kind of three phase electronic Din rail watt-hour meter. It completely accords with relevant technical requirements of class 1 and class 2. It can accurately and directly measure active energy consumption. It can also display total energy consumption by analog type impulse register or LCD display. This watt-hour meter is according to EN62053-21.



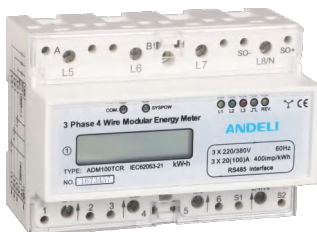
ADM100T



ADM100TC



ADM100TF



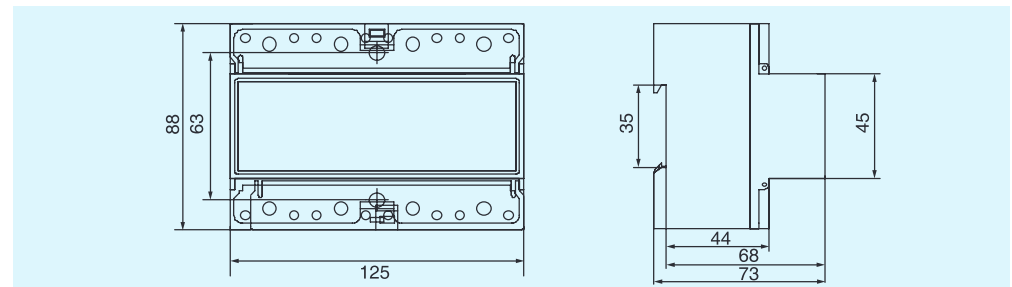
ADM100TCR

Conform to EN62053-21 Accuracy	Class 1, 2
Frequency	50/60Hz
Three phase	230V/400V
Rated impulse voltage	Uimp 10KV-1.2/50S
Power consumption	≤2W/10VA per phase
Temperature range	-10°C - +50°C

### 2. Specification

Type	Rating	Voltage	Class	Designation
ADM100T	1.5(6)A CT	230/400V	1.0	Three phase 7 module
ADM100TC	3(6)A CT			
ADM100TCR	5(30)A			
ADM100TCF	10(60)A			
	15(90)A			
	20(100)A			

### 3. Outer and Mount Dimension



### 4. Wiring Diagram

