

**ESTER**

SQUARE BOLLARD



Architectural LED lamp range in modern style, made of shockproof resin material, UV-rays stabilized, rust and corrosion-free. Square bollards in different sizes, spike and wall mounted versions available. Supplied with stepped shape reflector and with TÜV-CB certified, long-life, efficient and Kelvin settable GX53 LED lamps included. Insulation class II, Protection rating IP55.

*Collezione di lampade architettoniche a LED in stile moderno, realizzata in resina antiurto, stabilizzata ai raggi UV, inattaccabile da ruggine e corrosione. Ampia gamma di versioni disponibili per installazioni su stelo bollard quadro in diverse altezze, con picchetto o a parete. Provvista di riflettore a scaletta piramidale e fornita con incluse lampadine a LED GX53 con Kelvin impostabile certificate TÜV-CB di lunga durata ed elevata efficienza. Classe di isolamento II, grado di protezione IP55.*



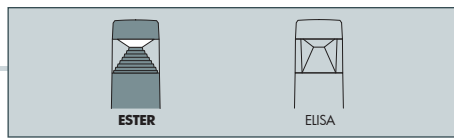
DS1.564.D1K

**CCT SETTABLE**

SDCM <6

3000 K 4000 K 6500 K



**ESTER COMPONENTS**

**IP55**



**CAP** fixed to the diffuser with no visible screws made of shockproof resin material, UV-rays stabilized, rust and corrosion-free.

**CALOTTA** fissata al diffusore senza viti a vista, realizzata in resina antiurto, stabilizzata ai raggi UV, inattaccabile da ruggine e corrosione

**DIFFUSER** in clear colour made of UV-rays stabilized polymethylmethacrilate (PMMA).

**DIFFUSORE** trasparente realizzato in polimetilmetacrilato (PMMA) resistente all'ingiallimento ed ai raggi UV.

**REFLECTOR** with stepped shape spreading the lighting output to emphasize the shape of the product. Made of shockproof resin material

**RIFLETTORE** a scaletta piramidale che consente al fascio di luce di enfatizzare la sagoma del prodotto. Realizzato in resina antiurto.



**INSTALLATION ELEMENTS:**

- POLES for bollard versions
- BASE for wall and surface installation
- SPIKE for in ground installation

**ELEMENTI DI FISSAGGIO:**

- STELI per versione bollard
- BASE per installazione a parete e al suolo
- PICCHETTO per installazione nel terreno

**ESTER**



**Dimensions**

Height: 165/500/800 mm  
Width: 126 mm  
Depth: 126 mm

**Moulded colours:**

- Black
- White
- Grey

**Diffuser PMMA:**

- Clear

**LED LAMPS**



Technical details on page 552.

**GX53 LED**

100 - 240 V

\*ADD. SUFFIX

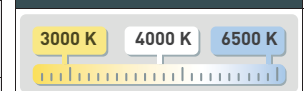


	3 W	7 W	10 W	350 Lm	800 Lm	1200 Lm	
GX53 LED				6500 K	6500 K	6500 K	.G1K
				4000 K	4000 K	4000 K	
				3000 K	3000 K	3000 K	
GX53 LED				6500 K	6500 K	6500 K	.C1K
				4000 K	4000 K	4000 K	
				3000 K	3000 K	3000 K	
GX53 LED				6500 K	6500 K	6500 K	.D1K
				4000 K	4000 K	4000 K	
				3000 K	3000 K	3000 K	

- **COST SAVING:** long-life and efficient LED light sources
- **BUILT-IN DRIVER:** quick and easy lamp replacement
- **GREAT FLEXIBILITY:** GX53 standard lamp holder
- **FUTURE-PROOFED LUMINARIES:** easy to upgrade
- **SUITABLE FOR OUTDOOR USE:** driver fully protected against heat and humidity by silicone paste.

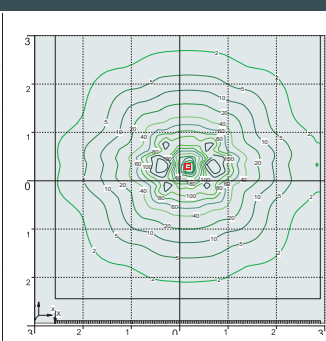
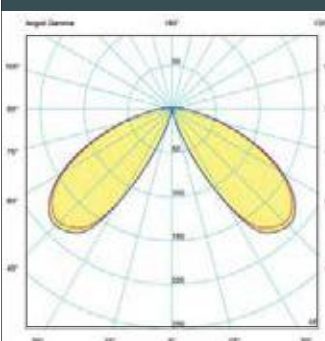
Bollard supplied with TÜV-CB certified, long-life, efficient and Kelvin settable GX53 LED lamp included. Different wattages available.

**CCT SETTABLE LED LAMP**



CCT switch settable in three different positions, to select the desired Kelvin temperature (3000K/4000K/6500K) and get a customized ambience.

**PHOTOMETRIC DATA SAMPLE**



**ESTER 800** clear GX53 10W.

Bollard height 0,8 mt  
Area: 6x6 mt - average 15 lux

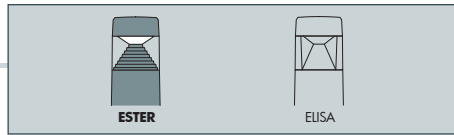
The photometric data for all the versions are available upon request or on our website.

3W = 40W  
350 Lm = incandescent  
**SAVE 93%**

7W = 75W  
10W = 100W  
**SAVE 90%**

\* ADD THESE SUFFIXES TO THE REFERENCES MENTIONED IN THE CATALOGUE





ESTER 800	
<b>3W</b>	DS1.564.G1K
<b>7W</b>	DS1.564.C1K
<b>10W</b>	DS1.564.D1K

CCT SETTABLE GX53 LED LAMP INCLUDED  
3000K/4000K/6500K

Pcs 6  
Kg 16  
mc 0,145

ESTER 500	
<b>3W</b>	DS1.563.G1K
<b>7W</b>	DS1.563.C1K
<b>10W</b>	DS1.563.D1K

CCT SETTABLE GX53 LED LAMP INCLUDED  
3000K/4000K/6500K

Pcs 12  
Kg 24  
mc 0,145

ESTER WALL	
<b>3W</b>	DS1.560.G1K
<b>7W</b>	DS1.560.C1K
<b>10W</b>	DS1.560.D1K

CCT SETTABLE GX53 LED LAMP INCLUDED  
3000K/4000K/6500K

Pcs 18  
Kg 22  
mc 0,092

ESTER SPIKE	
<b>3W</b>	DS1.561.G1K
<b>7W</b>	DS1.561.C1K
<b>10W</b>	DS1.561.D1K

CCT SETTABLE GX53 LED LAMP INCLUDED  
3000K/4000K/6500K

Pcs 18  
Kg 23  
mc 0,092