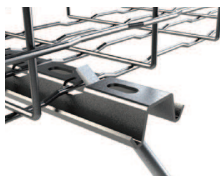


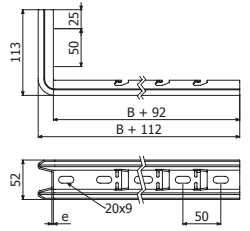
# BASORSUPPORT

## C-SHO

drawn in mm.



DESCRIPTION	Width		SWL		PREGALVANIZED			HOT DIP GALVANIZED			STAINLESS STEEL 304		
	inch	mm	Lbs	kg	REF.	kg/ud	lbs/ud	REF.	kg/ud	LBS/unit	REF.	kg/ud	LBS/unit
C-SHO 4"	4"	100	216	98	2/7230	0,38	0,84	2/7239	0,41	0,90	2/7490	0,38	0,84
C-SHO 6"	6"	150	198	90	2/7231	0,43	0,95	2/7240	0,47	1,03	2/7491	0,43	0,95
C-SHO 8"	8"	200	152	69	2/7232	0,49	1,08	2/7241	0,53	1,17	2/7492	0,49	1,08
C-SHO 12"	12"	300	99	45	2/7233	0,55	1,21	2/7242	0,59	1,30	2/7493	0,55	1,21
SHO/SHOT piece					2/6240	0,03	0,066	2/6318	0,03	0,07	-	-	-



No additional pieces are required to fix wire-mesh cable trays. The design of the brackets, with the T-shaped fixing flap, allows a resistant and easy installation of the trays BASORFIL BFR/BF only using a flat bated screwdriver.

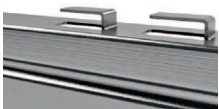
For anchoring to the wall, a SHO supporting piece (2/6240 in EZ, 2/6318 in HDG) is necessary. If SHO supporting piece is not used the SWL values fell by 12% and the strut can crash when the anchor presses it.

SHO Supporting piece

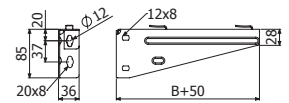


## SRB SUPPORT

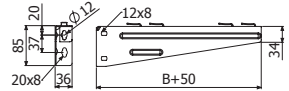
drawn in mm.



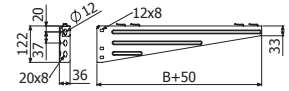
DESCRIPTION	Width		SWL		PREGALVANIZED			HOT DIP GALVANIZED		
	inch	mm	Lbs	kg	REF.	kg/ud	LBS/unit	REF.	kg/ud	LBS/unit
SRB 4"	4"	100	132	60	2/6372	0,24	0,53	2/6379	0,27	0,59
SRB 6"	6"	150	132	60	2/6373	0,3	0,66	2/6380	0,33	0,73
SRB 8"	8"	200	132	60	2/6374	0,38	0,84	2/6381	0,42	0,92
SRB 12"	12"	300	132	60	2/6375	0,66	1,45	2/6382	0,68	1,50
SRB 16"	16"	400	132	60	2/6376	0,83	1,83	2/6383	0,85	1,87
SRB 20"	20"	500	132	60	2/6377	0,95	2,09	2/6384	1,03	2,27
SRB 24"	24"	600	132	60	2/6378	1,11	2,44	2/6385	1,2	2,64



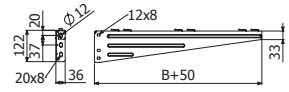
SRB Support100/150/200



SRB Support300/400



SRB Support500



SRB Support600



## SIMPLE WALL BRACKET

drawn in mm.



DESCRIPTION	PREGALVANIZED			HOT DIP GALVANIZED		
	REF.	kg/ud	LBS/unit	REF.	kg/ud	LBS/unit
Simple wall bracket	2/6289	0,20	0,44	2/5881	0,20	0,44

Allows the assembly of models B500/600/750 of the SCR and SRB supports in curved walls and inclined planes.

