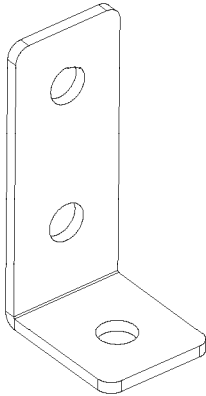




4182CD



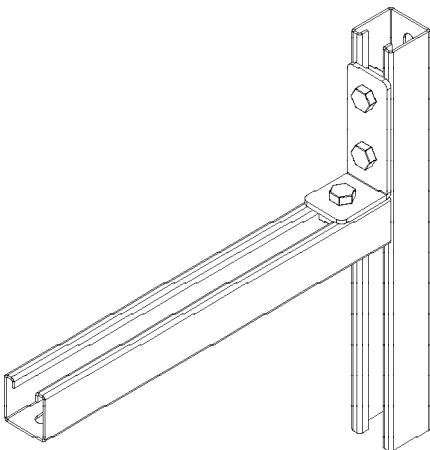
Finishes: HDG, SS304, SS316

Characteristics:

- Metallic
- Non-flame propagating component
- Electrically conductive component
- With metallic coating. Resistance to corrosion:

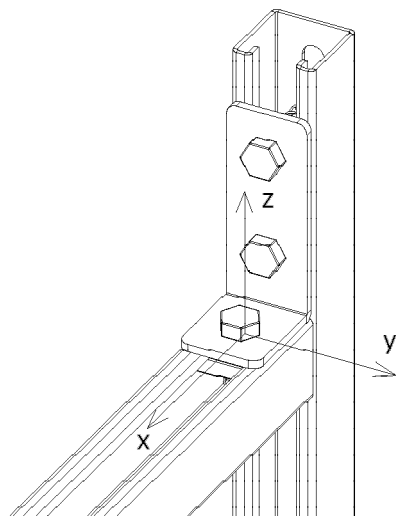
HDG: class 6      SS304: class 9A      SS316: class 9B

INSTRUCTIONS FOR USE



- Piece 4182CD allows the assembly of two profiles in an angle of 90° by using bolts and spring nuts.
- To join profiles with 4182CD, 3 M10 (or M8) spring nuts and 3 M10x30 DIN 933 Bolts (or 3 M8x30 DIN 933 + 3 M8 DIN 9021 washers) are required.
- To fix 4182CD in the slotted face of the strut profiles 3 B3 M10x20 bolt sets are needed.
- It is usually assembled together with other accessories of the BASORFIX 41/82 family for the construction of RACKS and supports to fix cable trays in galleries and tunnels.

SAFE WORKING LOAD



ADMISSIBLE EFFORTS					
Montaje	Mx	My	Fx	Fx	Fz
	kg.m	kg.m	kg	kg	kg
	+16	+25	1150	300	535
	-16	-7			
	+16	+59	1150	300	535
	-16	-16			

It has been checked that the behaviour of a symmetrical assembly reduces the deflections and allow the individual piece to reach higher bending moment values

Declared values include 1.7 safety factor as requested in EN IEC 61537 for cable tray supports.

If the assembly is done by means of spring nuts, Fx and Fz load values are limited by the maximum traction/sliding values of the spring nut (350/700 kg).

Related products:

BASORFIX 41/82 profiles and accessories.