

Steel wall mount enclosure

TIBOX[®]
TIANQI ELECTRIC



Steel wall mount enclosure



Single door wall mount enclosure

Supply Include

Enclosure and door ,mounting plate, lock system, gland plate, sealing gasket and fixing accessories.

Standard Configuration

Paint finish epoxy polyester powder coating textured finish

Color: RAL 7032 or RAL 7035

Protection degree:IP 66

Against mechanical impacts: IK 10

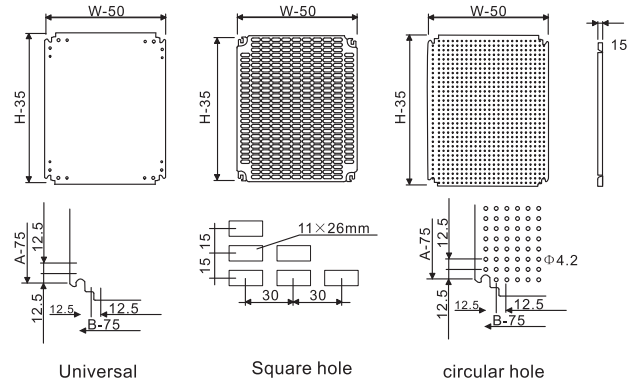
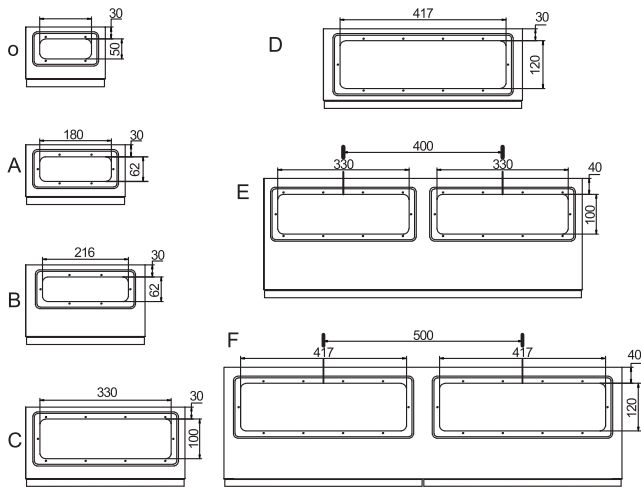
Thickness:

Enclosure & door: sheet steel 1.2mm till size

ST6 820 then 1.5mm.

Mounting p late:

zinc-coated steel 1.5mm till size ST6 820 then 2.0mm



Note: door hinges on the left for the left open door,
door hinges on the right for the right open door

Selection Table

| Model | W | H | D | No.of lock | Gland open |
|-----------|-----|-----|-----|------------|------------|
| ST2 215 | 200 | 200 | 150 | 1 | O |
| ST2 2515 | 200 | 250 | 150 | 1 | O |
| ST25 2515 | 250 | 250 | 150 | 1 | A |
| ST2 315 | 200 | 300 | 150 | 1 | O |
| ST25 315 | 250 | 300 | 150 | 1 | A |
| ST3 315 | 300 | 300 | 150 | 1 | B |
| ST4 315 | 400 | 300 | 150 | 1 | B |
| ST3 415 | 300 | 400 | 150 | 1 | B |
| ST4 415 | 400 | 400 | 150 | 1 | B |
| ST3 515 | 300 | 500 | 150 | 1 | B |
| ST4 515 | 400 | 500 | 150 | 1 | B |
| ST5 515 | 500 | 500 | 150 | 1 | D |
| ST4 615 | 400 | 600 | 150 | 2 | C |
| ST5 615 | 500 | 600 | 150 | 2 | D |
| ST25 320 | 250 | 300 | 200 | 1 | A |
| ST3 320 | 300 | 300 | 200 | 1 | B |
| ST4 320 | 400 | 300 | 200 | 1 | B |
| ST3 420 | 300 | 400 | 200 | 1 | B |
| ST4 420 | 400 | 400 | 200 | 1 | B |
| ST6 420 | 600 | 400 | 200 | 1 | D |
| ST3 520 | 300 | 500 | 200 | 1 | B |
| ST4 520 | 400 | 500 | 200 | 1 | C |

| Model | W | H | D | No.of lock | Gland open |
|----------|-----|------|-----|------------|------------|
| ST5 520 | 500 | 500 | 200 | 1 | D |
| ST4 620 | 400 | 600 | 200 | 2 | C |
| ST5 620 | 500 | 600 | 200 | 2 | D |
| ST6 620 | 600 | 600 | 200 | 2 | D |
| ST5 720 | 500 | 700 | 200 | 2 | D |
| ST6 720 | 600 | 700 | 200 | 2 | D |
| ST6 820 | 600 | 800 | 200 | 2 | D |
| ST8 820 | 800 | 800 | 200 | 2 | E |
| ST6 1020 | 600 | 1000 | 200 | 3 | D |
| ST8 1020 | 800 | 1000 | 200 | 3 | E |
| ST6 1220 | 600 | 1200 | 200 | 3 | D |
| ST8 1220 | 800 | 1200 | 200 | 3 | E |
| ST4 425 | 400 | 400 | 250 | 1 | C |
| ST6 425 | 600 | 400 | 250 | 1 | D |
| ST4 525 | 400 | 500 | 250 | 1 | C |
| ST5 525 | 500 | 500 | 250 | 1 | D |
| ST4 625 | 400 | 600 | 250 | 2 | C |
| ST5 625 | 500 | 600 | 250 | 2 | D |
| ST6 625 | 600 | 600 | 250 | 2 | D |
| ST5 725 | 500 | 700 | 250 | 2 | D |
| ST6 825 | 600 | 800 | 250 | 2 | D |
| ST8 825 | 800 | 800 | 250 | 2 | E |

| Model | W | H | D | No.of lock | Gland open |
|----------|-----|------|-----|------------|------------|
| ST6 1025 | 600 | 1000 | 250 | 3 | D |
| ST8 1025 | 800 | 1000 | 250 | 3 | E |
| ST6 1225 | 600 | 1200 | 250 | 3 | D |
| ST8 1225 | 800 | 1200 | 250 | 3 | E |
| ST4 530 | 400 | 500 | 300 | 1 | C |
| ST4 630 | 400 | 600 | 300 | 2 | C |
| ST5 630 | 500 | 600 | 300 | 2 | D |
| ST6 630 | 600 | 600 | 300 | 2 | D |
| ST5 730 | 500 | 700 | 300 | 2 | D |
| ST6 830 | 600 | 800 | 300 | 2 | D |
| ST8 830 | 800 | 800 | 300 | 2 | E |
| ST6 1030 | 600 | 1000 | 300 | 3 | D |
| ST6 1230 | 600 | 1200 | 300 | 3 | D |
| ST8 1030 | 800 | 1000 | 300 | 3 | E |
| ST8 1230 | 800 | 1200 | 300 | 3 | E |
| ST8 1430 | 800 | 1400 | 300 | 3 | E |
| ST6 840 | 600 | 800 | 400 | 2 | D |
| ST8 840 | 800 | 800 | 400 | 2 | E |
| ST6 1040 | 600 | 1000 | 400 | 3 | D |
| ST8 1040 | 800 | 1000 | 400 | 3 | E |
| ST6 1240 | 600 | 1200 | 400 | 3 | D |
| ST8 1240 | 800 | 1200 | 400 | 3 | E |
| ST8 1440 | 800 | 1400 | 400 | 3 | E |

Double door wall mount enclosure Gland box for wall mount enclosure



Double door wall mount enclosure

Supply Include

Enclosure and door with lock system, galvanised mounting plate, gland plate, sealing gasket and fixing accessories.

Standard Configuration

Paint finish epoxy polyester powder coating textured finish

Color: RAL 7032 or RAL 7035

Protection degree: IP 55

Against mechanical impacts: IK 10

Thickness:

Enclosure & door: sheet steel 1.5mm.

Mounting plate:

Galvanised sheet steel :2.0mm

STD(standard lock K2)

| Model | W | H | D | No.of lock | Gland open |
|------------|------|------|-----|------------|------------|
| STD8 620 | 800 | 600 | 200 | 2 | E |
| STD8 625 | 800 | 600 | 250 | 2 | E |
| STD8 630 | 800 | 600 | 300 | 2 | E |
| STD8 640 | 800 | 600 | 400 | 2 | E |
| STD10 620 | 1000 | 600 | 200 | 2 | E |
| STD10 625 | 1000 | 600 | 250 | 2 | E |
| STD10 630 | 1000 | 600 | 300 | 2 | E |
| STD10 640 | 1000 | 600 | 400 | 2 | E |
| STD12 620 | 1200 | 600 | 200 | 2 | E |
| STD12 625 | 1200 | 600 | 250 | 2 | E |
| STD12 630 | 1200 | 600 | 300 | 2 | E |
| STD12 640 | 1200 | 600 | 400 | 2 | E |
| STD8 820 | 800 | 800 | 200 | 2 | F |
| STD8 825 | 800 | 800 | 250 | 2 | F |
| STD8 830 | 800 | 800 | 300 | 2 | F |
| STD8 840 | 800 | 800 | 400 | 2 | F |
| STD10 820 | 1000 | 800 | 200 | 2 | F |
| STD10 825 | 1000 | 800 | 250 | 2 | F |
| STD10 830 | 1000 | 800 | 300 | 2 | F |
| STD10 840 | 1000 | 800 | 400 | 2 | F |
| STD12 820 | 1200 | 800 | 200 | 2 | F |
| STD12 825 | 1200 | 800 | 250 | 2 | F |
| STD12 830 | 1200 | 800 | 300 | 2 | F |
| STD12 840 | 1200 | 800 | 400 | 2 | F |
| STD10 1020 | 1000 | 1000 | 200 | 2 | F |
| STD10 1025 | 1000 | 1000 | 250 | 2 | F |
| STD10 1030 | 1000 | 1000 | 300 | 2 | F |
| STD10 1040 | 1000 | 1000 | 400 | 2 | F |
| STD12 1020 | 1200 | 1000 | 200 | 2 | F |
| STD12 1025 | 1200 | 1000 | 250 | 2 | F |
| STD12 1030 | 1200 | 1000 | 300 | 2 | F |
| STD12 1040 | 1200 | 1000 | 400 | 2 | F |
| STD10 1220 | 1000 | 1200 | 200 | 2 | F |
| STD10 1225 | 1000 | 1200 | 250 | 2 | F |
| STD10 1230 | 1000 | 1200 | 300 | 2 | F |
| STD10 1240 | 1000 | 1200 | 400 | 2 | F |

STDD(Rod Centre lock) with lock MS821

| Model | W | H | D | No.of lock | Gland open |
|-------------|------|------|-----|------------|------------|
| STDD8 620 | 800 | 600 | 200 | 1 | E |
| STDD8 625 | 800 | 600 | 250 | 1 | E |
| STDD8 630 | 800 | 600 | 300 | 1 | E |
| STDD8 640 | 800 | 600 | 400 | 1 | E |
| STDD10 620 | 1000 | 600 | 200 | 1 | E |
| STDD10 625 | 1000 | 600 | 250 | 1 | E |
| STDD10 630 | 1000 | 600 | 300 | 1 | E |
| STDD10 640 | 1000 | 600 | 400 | 1 | E |
| STDD12 620 | 1200 | 600 | 200 | 1 | E |
| STDD12 625 | 1200 | 600 | 250 | 1 | E |
| STDD12 630 | 1200 | 600 | 300 | 1 | E |
| STDD12 640 | 1200 | 600 | 400 | 1 | E |
| STDD8 820 | 800 | 800 | 200 | 1 | F |
| STDD8 825 | 800 | 800 | 250 | 1 | F |
| STDD8 830 | 800 | 800 | 300 | 1 | F |
| STDD8 840 | 800 | 800 | 400 | 1 | F |
| STDD10 820 | 1000 | 800 | 200 | 1 | F |
| STDD10 825 | 1000 | 800 | 250 | 1 | F |
| STDD10 830 | 1000 | 800 | 300 | 1 | F |
| STDD10 840 | 1000 | 800 | 400 | 1 | F |
| STDD12 820 | 1200 | 800 | 200 | 1 | F |
| STDD12 825 | 1200 | 800 | 250 | 1 | F |
| STDD12 830 | 1200 | 800 | 300 | 1 | F |
| STDD12 840 | 1200 | 800 | 400 | 1 | F |
| STDD10 1020 | 1000 | 1000 | 200 | 1 | F |
| STDD10 1025 | 1000 | 1000 | 250 | 1 | F |
| STDD10 1030 | 1000 | 1000 | 300 | 1 | F |
| STDD10 1040 | 1000 | 1000 | 400 | 1 | F |
| STDD12 1020 | 1200 | 1000 | 200 | 1 | F |
| STDD12 1025 | 1200 | 1000 | 250 | 1 | F |
| STDD12 1030 | 1200 | 1000 | 300 | 1 | F |
| STDD12 1040 | 1200 | 1000 | 400 | 1 | F |
| STDD10 1220 | 1000 | 1200 | 200 | 1 | F |
| STDD10 1225 | 1000 | 1200 | 250 | 1 | F |
| STDD10 1230 | 1000 | 1200 | 300 | 1 | F |
| STDD10 1240 | 1000 | 1200 | 400 | 1 | F |



Gland box

GB series box can be used as the gland box of the ST wall mount enclosure,

Material:sheet steel 1.2mm ,surface finish:epoxy polyester powder coating textured finish Color:RAL7035 or RAL 7032

| Model | Size(mm) | | |
|---------|----------|------|-----|
| | W | H | D |
| GB432 | 300 | 400 | 200 |
| GB532 | 300 | 500 | 200 |
| GB632 | 300 | 600 | 200 |
| GB8325 | 300 | 800 | 250 |
| GB4252 | 250 | 400 | 200 |
| GB5252 | 250 | 500 | 200 |
| GB6252 | 250 | 600 | 200 |
| GB82525 | 250 | 800 | 250 |
| GB422 | 200 | 400 | 200 |
| GB522 | 200 | 500 | 200 |
| GB1033 | 300 | 1000 | 300 |

more size to be request to the clients



Toughened glass door wall mount enclosure

Inner door wall mount enclosure

Toughened glass door+inner door wall mount enclosure



Plexiglass door wall mount enclosure(STP)

Supply include: enclosure and door with glass ,with lock system, galvanised mounting plate, gland plate, sealing gasket and fixing accessories.

Color: RAL 7032 or RAL 7035, paint finish epoxy polyester powder coating textured finish

Protection degree: IP 66 Against mechanical impacts:IK10

Thickness: enclosure & door : sheet steel 1.2mm till size STP6 820 then 1.5mm, mounting plate:galvanised steel 1.5mm till size STP6 820 then 2.0mm, plexiglass door 4.0mm

| Model | W × H × D(mm) | No.of lock |
|----------|---------------|------------|
| STP3 415 | 300×400×150 | 1 |
| STP3 420 | 300×400×200 | 1 |
| STP4 315 | 400×300×150 | 1 |
| STP4 420 | 400×400×200 | 1 |
| STP4 520 | 400×500×200 | 1 |
| STP4 620 | 400×600×200 | 2 |
| STP5 520 | 500×500×200 | 1 |
| STP5 720 | 500×700×200 | 2 |
| STP5 725 | 500×700×250 | 2 |
| STP6 420 | 600×400×200 | 1 |

| Model | W × H × D(mm) | No.of lock |
|-----------|---------------|------------|
| STP6 620 | 600×600×200 | 2 |
| STP6 625 | 600×600×250 | 2 |
| STP6 630 | 600×600×300 | 2 |
| STP6 820 | 600×800×200 | 2 |
| STP6 825 | 600×800×250 | 2 |
| STP6 830 | 600×800×300 | 2 |
| STP6 1230 | 600×1200×300 | 3 |
| STP8 830 | 800×800×300 | 2 |
| STP8 1030 | 800×1000×300 | 3 |
| STP8 1230 | 800×1200×300 | 3 |



Inner door wall mount enclosure(STI)

Supply include: enclosure and door & inner door ,with lock system, galvanised mounting plate, gland plate, sealing gasket and fixing accessories.

Color: RAL 7032 or RAL 7035, paint finish epoxy polyester powder coating textured finish

Protection degree: IP 66 Against mechanical impacts:IK10

Enclosure, door & inner door: sheet steel 1.2mm till size STI6 820 then 1.5mm, mounting plate:galvanised steel 1.5mm till size STI6 820 then 2.0mm, inner door 1.2mm

| Model | W × H × D(mm) | No.of lock |
|----------|---------------|------------|
| STI3 415 | 300×400×150 | 1 |
| STI3 420 | 300×400×200 | 1 |
| STI4 315 | 400×300×150 | 1 |
| STI4 420 | 400×400×200 | 1 |
| STI4 520 | 400×500×200 | 1 |
| STI4 620 | 400×600×200 | 2 |
| STI5 520 | 500×500×200 | 1 |
| STI5 720 | 500×700×200 | 2 |
| STI5 725 | 500×700×250 | 2 |
| STI6 420 | 600×400×200 | 1 |

| Model | W × H × D(mm) | No.of lock |
|-----------|---------------|------------|
| STI6 620 | 600×600×200 | 2 |
| STI6 625 | 600×600×250 | 2 |
| STI6 630 | 600×600×300 | 2 |
| STI6 820 | 600×800×200 | 2 |
| STI6 825 | 600×800×250 | 2 |
| STI6 830 | 600×800×300 | 2 |
| STI6 1230 | 600×1200×300 | 3 |
| STI8 830 | 800×800×300 | 2 |
| STI8 1030 | 800×1000×300 | 3 |
| STI8 1230 | 800×1200×300 | 3 |



Toughened glass door + inner door wall mount enclosure(STIP)

Supply include: enclosure and door with glass,inner door,with lock system, galvanised mounting plate,gland plate, sealing gasket and fixing accessories.

Color: RAL 7032 or RAL 7035, paint finish epoxy polyester powder coating textured finish

Protection degree: IP 66 Against mechanical impacts:IK10

Enclosure & door sheet steel 1.2mm till size STIP6 820 then 1.5mm, mounting plate:zinc-coated steel 1.5mm till size STIP6 820 then 2.0mm, plexiglass door 4.0mm, inner door: 1.2mm

| Model | W × H × D(mm) | No.of lock |
|-----------|---------------|------------|
| STIP3 415 | 300×400×150 | 1 |
| STIP3 420 | 300×400×200 | 1 |
| STIP4 315 | 400×300×150 | 1 |
| STIP4 420 | 400×400×200 | 1 |
| STIP4 520 | 400×500×200 | 1 |
| STIP4 620 | 400×600×200 | 2 |
| STIP5 520 | 500×500×200 | 1 |
| STIP5 720 | 500×700×200 | 2 |
| STIP5 725 | 500×700×250 | 2 |
| STIP6 420 | 600×400×200 | 1 |

| Model | W × H × D(mm) | No.of lock |
|------------|---------------|------------|
| STIP6 620 | 600×600×200 | 2 |
| STIP6 625 | 600×600×250 | 2 |
| STIP6 630 | 600×600×300 | 2 |
| STIP6 820 | 600×800×200 | 2 |
| STIP6 825 | 600×800×250 | 2 |
| STIP6 830 | 600×800×300 | 2 |
| STIP6 1230 | 600×1200×300 | 3 |
| STIP8 830 | 800×800×300 | 2 |
| STIP8 1030 | 800×1000×300 | 3 |
| STIP8 1230 | 800×1200×300 | 3 |

more size to be request to the client

MCB box



MCB box surface type or flush type

AS & AE series boxes are TIBOX specially designed for MCBs. This kind of surface & flush mounting boxes can assemble 16P & 24P MCBs each row, knock-outs provided on all sides

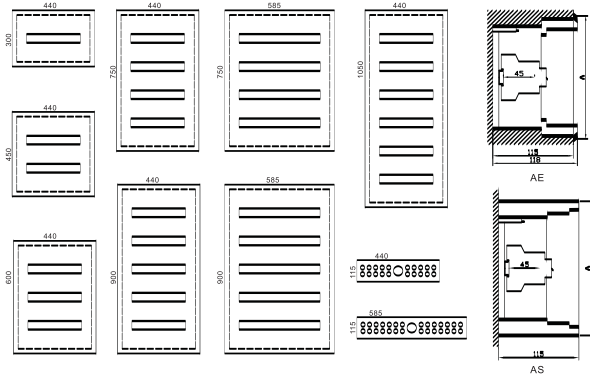
Material: Sheet steel 1.0mm

Protection degree: IP54

Surface finish: epoxy polyester powder coating textured finish

Color: RAL 7035

Supply include: body with din rails, front frame & door with lock system pack: 1 piece



| Surface type | DOOR(mm) | | | ROW | NO. of breakers |
|--------------|----------|------|-----|-----|-----------------|
| | W | H | D | | |
| AS1 16 | 440 | 300 | 115 | 1 | ×16P |
| AS2 16 | 440 | 450 | 115 | 2 | ×16P |
| AS3 16 | 440 | 600 | 115 | 3 | ×16P |
| AS4 16 | 440 | 750 | 115 | 4 | ×16P |
| AS5 16 | 440 | 900 | 115 | 5 | ×16P |
| AS6 16 | 440 | 1050 | 115 | 6 | ×16P |
| AS4 24 | 585 | 750 | 115 | 4 | ×24P |
| AS5 24 | 585 | 900 | 115 | 5 | ×24P |

| Flush type | DOOR(mm) | | | ROW | NO. of breakers |
|------------|----------|------|-----|-----|-----------------|
| | W | H | D | | |
| AE1 16 | 465 | 325 | 115 | 1 | ×16P |
| AE2 16 | 465 | 475 | 115 | 2 | ×16P |
| AE3 16 | 465 | 625 | 115 | 3 | ×16P |
| AE4 16 | 465 | 775 | 115 | 4 | ×16P |
| AE5 16 | 465 | 925 | 115 | 5 | ×16P |
| AE6 16 | 465 | 1075 | 115 | 6 | ×16P |
| AE4 24 | 610 | 775 | 115 | 4 | ×24P |
| AE5 24 | 610 | 925 | 115 | 5 | ×24P |



MCB box surface type

AS series boxes are TIBOX specially designed for MCBs. This kind of surface mounting boxes can assemble 13P & 18P MCBs each row, surface mounting conforming to IP54, knock-outs provided on all sides

Material: Sheet steel 1.0mm

Surface finish: epoxy polyester powder coating textured finish

Color: RAL 7035

Supply include: body with din rails, front frame & door with lock system, earth wire pack: 1 piece

| Surface type | DOOR(mm) | | | ROW | NO. of breakers |
|--------------|----------|-----|-----|-----|-----------------|
| | W | H | D | | |
| AS1 13 | 355 | 275 | 110 | 1 | ×13P |
| AS2 13 | 355 | 380 | 110 | 2 | ×13P |
| AS3 13 | 355 | 530 | 110 | 3 | ×13P |
| AS4 13 | 355 | 680 | 110 | 4 | ×13P |
| AS5 13 | 355 | 830 | 110 | 5 | ×13P |
| AS1 18 | 455 | 275 | 110 | 1 | ×18P |
| AS2 18 | 455 | 380 | 110 | 2 | ×18P |
| AS3 18 | 455 | 530 | 110 | 3 | ×18P |
| AS4 18 | 455 | 680 | 110 | 4 | ×18P |
| AS5 18 | 455 | 830 | 110 | 5 | ×18P |



MCB box Telephone box



Modular kit for steel wall mount box

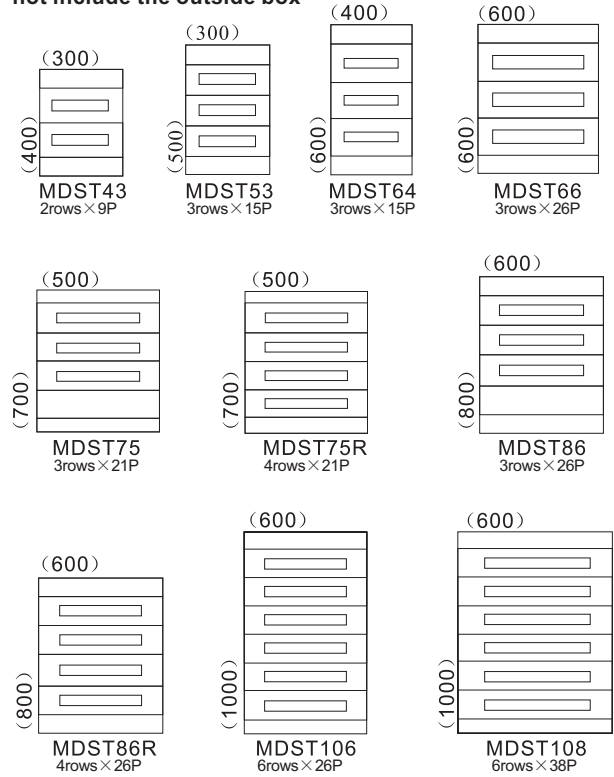
MDST modular kit boxes are TIBOX specially designed for MCBs. This kind of surface mounting boxes can assemble 9P & 15P, 21P, 26P, 38P MCBs each row, or adjust by your own.
Material: Sheet steel 1.2mm

Surface finish: epoxy polyester powder coating textured finish
Color: RAL 7035 OR RAL 7032

Model: MDST

Supply include: MDST modular kit pack: 1 piece
not include the outside box

| MODEL | DOOR (mm) | | No. of breakers | Breakers qty PCS | No. of rows |
|---------|-----------|------|-----------------|------------------|-------------|
| | W | H | | | |
| MDST43 | 300 | 400 | 2rows×9P | 18 | 2 |
| MDST54 | 400 | 500 | 3rows×15P | 45 | 3 |
| MDST64 | 400 | 600 | 3rows×15P | 45 | 3 |
| MDST66 | 600 | 600 | 3rows×26P | 78 | 3 |
| MDST75 | 500 | 700 | 3rows×21P | 60 | 4 |
| MDST75R | 500 | 700 | 4rows×21P | 80 | 4 |
| MDST86 | 600 | 800 | 3rows×26P | 78 | 4 |
| MDST86R | 600 | 800 | 4rows×26P | 104 | 4 |
| MDST106 | 600 | 1000 | 6rows×26P | 158 | 6 |
| MDST108 | 800 | 1000 | 6rows×38P | 222 | 6 |



Telephone enclosure

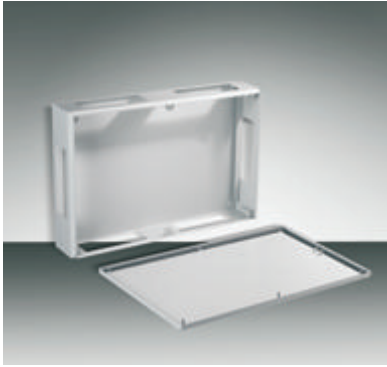
TE enclosure are designed to standard telephone connectors used for domestic and commercial application. Flush or surface mounting conforming to IP41. Made out of high quality steel sheet, knock-outs provided on all sides, adjustable zinc mounting plate, with cam key lock

Color: RAL 7035

Thickness: 1.0mm

| Model | W(mm) | H(mm) | D(mm) | CONNECTION PAIRS | Description |
|---------|-------|-------|-------|------------------|--------------|
| TE2323 | 230 | 230 | 100 | 10 TO 40 | Surface Type |
| TEF2323 | 230 | 230 | 100 | 10 TO 60 | Flush type |
| TE3033 | 330 | 300 | 100 | 10 TO 70 | Surface Type |
| TEF3033 | 330 | 300 | 100 | 10 TO 80 | Flush type |
| TE3752 | 520 | 370 | 100 | 10 TO 140 | Surface Type |
| TEF3752 | 520 | 370 | 100 | 10 TO 160 | Flush type |
| TE5262 | 620 | 520 | 100 | 10 TO 420 | Surface Type |

Steel terminal box



TL-G series - with gland hole

Supply Include: Enclosure & cover (sheet steel 1.2mm), sealing gasket and fixing accessories, Gland holes & gland plates

Paint finish: epoxy polyester powder coating textured finish Color: RAL7032 or RAL7035

Protection degree: IP66 Against mechanical impacts: IK10

galvanised mounting plate to be supplied separately, see Page 08...

| Model | W H D |
|------------|-------------|
| TL301512-G | 300×150×120 |
| TL302012-G | 300×200×120 |
| TL303012-G | 300×300×120 |
| TL402012-G | 400×200×120 |
| TL404012-G | 400×400×120 |
| TL502012-G | 500×200×120 |

| Model | W H D |
|------------|-------------|
| TL503012-G | 500×300×120 |
| TL602012-G | 600×200×120 |
| TL603012-G | 600×300×120 |
| TL604012-G | 600×400×120 |
| TL802012-G | 800×200×120 |
| TL804012-G | 800×400×120 |



TL series - No gland hole

Supply Include: Enclosure & cover (sheet steel 1.2mm), sealing gasket and fixing accessories,

Paint finish: epoxy polyester powder coating textured finish Color: RAL7032 or RAL7035

Protection degree: IP66 Against mechanical impacts: IK10

galvanised mounting plate to be supplied separately, see Page 08...

| Model | W H D |
|----------|-------------|
| TL15158 | 150×150×80 |
| TL151512 | 150×150×120 |
| TL201512 | 200×150×120 |
| TL20208 | 200×200×80 |
| TL30158 | 300×150×80 |
| TL301512 | 300×150×120 |

| Model | W H D |
|----------|-------------|
| TL30208 | 300×200×80 |
| TL302012 | 300×200×120 |
| TL401512 | 400×150×120 |
| TL40208 | 400×200×80 |
| TL403012 | 400×300×120 |
| TL404012 | 400×400×120 |

| Model | W H D |
|----------|-------------|
| TL502012 | 500×200×120 |
| TL503012 | 500×300×120 |
| TL602012 | 600×200×120 |
| TL603012 | 600×300×120 |
| TL802012 | 800×200×120 |
| TL804012 | 800×400×120 |



TB series 180° hinges with lock system

Supply Include: Enclosure with gland holes, cover with sealing gasket and fixing accessories, lock system Paint finish: epoxy polyester powder coating textured finish.

Color: RAL7032 or RAL7035 Protection degree: IP66 Against mechanical impacts: IK10

galvanised mounting plate to be supplied separately, see Page 08...

| Model | W H D |
|----------|-------------|
| TB15158 | 150×150×80 |
| TB15308 | 150×300×80 |
| TB20208 | 200×200×80 |
| TB20308 | 200×300×80 |
| TB20408 | 200×400×80 |
| TB151512 | 150×150×120 |
| TB153012 | 150×300×120 |
| TB202012 | 200×200×120 |

| Model | W H D |
|-----------|-------------|
| TB203012 | 200×300×120 |
| TB204012 | 200×400×120 |
| TB205012 | 200×500×120 |
| TB303012 | 300×300×120 |
| TB304012 | 300×400×120 |
| TB3040155 | 300×400×155 |
| TB3060155 | 300×600×155 |
| TB3080155 | 300×800×155 |



TBS series 180° hinges with hinges

Supply Include: Enclosure with gland holes, cover with sealing gasket and fixing accessories

Paint finish: epoxy polyester powder coating textured finish. Color: RAL7032 or RAL7035

Protection degree: IP66 Against mechanical impacts: IK10

galvanised mounting plate to be supplied separately, see Page 08...

| Model | W H D |
|----------|------------|
| TBS15158 | 150×150×80 |
| TBS15308 | 150×300×80 |
| TBS20208 | 200×200×80 |
| TBS20308 | 200×300×80 |
| TBS20408 | 200×400×80 |

| Model | W H D |
|-----------|-------------|
| TBS151512 | 150×150×120 |
| TBS153012 | 150×300×120 |
| TBS202012 | 200×200×120 |
| TBS203012 | 200×300×120 |
| TBS204012 | 200×400×120 |

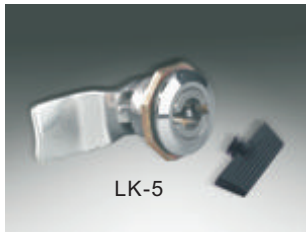
| Model | W H D |
|------------|-------------|
| TBS205012 | 200×500×120 |
| TBS303012 | 300×300×120 |
| TBS304012 | 300×400×120 |
| TBS3040155 | 300×400×155 |
| TBS3060155 | 300×600×155 |

more size to be request to the clients

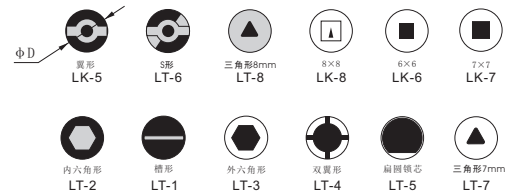
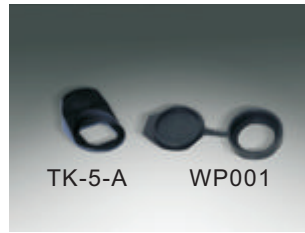


Accessories of wall mount enclosure

Metal lock

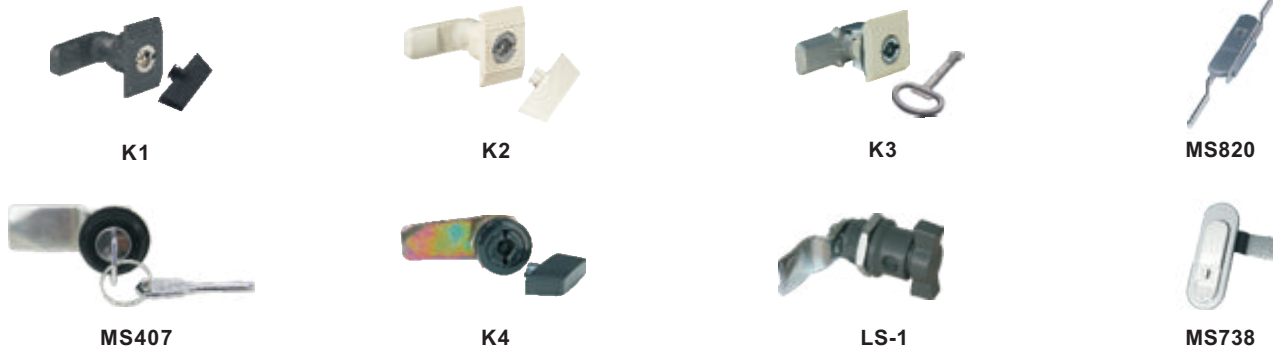


Rain-proof cover for lock



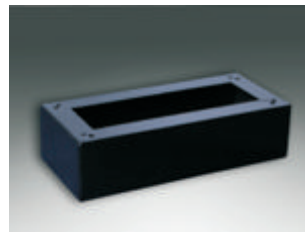
Lock transformations to zinc alloy insert triangle and square options

Locks



Plinth for wall mount enclosure

100mm high plinth can be used for ST boxes. Material: sheet steel Color: RAL 6022



| Model | Cabinet size(mm) | |
|-------|------------------|-----|
| | W | D |
| TT42 | 400 | 200 |
| TT52 | 500 | 200 |
| TT62 | 600 | 200 |
| TT82 | 800 | 200 |
| TT102 | 1000 | 200 |
| TT122 | 1200 | 200 |

| Model | Cabinet size(mm) | |
|--------|------------------|-----|
| | W | D |
| TT425 | 400 | 250 |
| TT525 | 500 | 250 |
| TT625 | 600 | 250 |
| TT825 | 800 | 250 |
| TT1025 | 1000 | 250 |
| TT1225 | 1200 | 250 |

| Model | Cabinet size(mm) | |
|-------|------------------|-----|
| | W | D |
| TT43 | 400 | 300 |
| TT53 | 500 | 300 |
| TT63 | 600 | 300 |
| TT83 | 800 | 300 |
| TT103 | 1000 | 300 |
| TT123 | 1200 | 300 |

more size to be request to the clients

Earth wire for enclosure



| Model | S(mm ²) | Length(mm) | Diameter of rings(mm) |
|-----------|---------------------|------------|-----------------------|
| TJ-CM6130 | 6 | 130 | 6.4 |
| TJ-CM6160 | 6 | 160 | 6.4 |
| TJ-CM6168 | 6 | 160 | 8.3 |
| TJ-CM1025 | 10 | 250 | 6.4 |
| TJ-CM2535 | 25 | 350 | 8.3 |

Plastic cover for MCB box



Model: MC09

MC18

Molded plastic cover to be used in MCB enclosure to cover the holes, to avoid dust and water inside the MCB enclosure

MC09 9mm long 1/2P

MC18 18mm long 1P

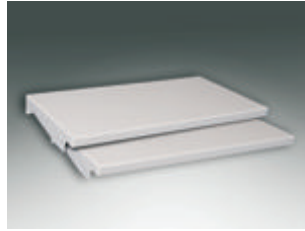
Accessories of wall mount enclosure

Canopy (roof)

Recommended for outdoor installation.-Manufactured in 1.2mm sheet steel.

Surface finish:TIBOX standard cycle thermosetting epoxy polyester powder coating in textured for outdoor installation.

we suggest a specific painting Color: RAL 7032 or RAL 7035



| Model | For box size(mm) | |
|--------|------------------|-----|
| | W | D |
| TT1 03 | 300 | 150 |
| TT2 03 | 300 | 200 |
| TT0 04 | 400 | 150 |
| TT1 04 | 400 | 200 |
| TT2 04 | 400 | 250 |
| TT3 04 | 400 | 300 |
| TT0 05 | 500 | 150 |
| TT1 05 | 500 | 200 |
| TT2 05 | 500 | 250 |

| Model | For box size(mm) | |
|--------|------------------|-----|
| | W | D |
| TT3 05 | 500 | 300 |
| TT0 06 | 600 | 200 |
| TT1 06 | 600 | 250 |
| TT2 06 | 600 | 300 |
| TT3 06 | 600 | 400 |
| TT0 08 | 800 | 200 |
| TT1 08 | 800 | 250 |
| TT2 08 | 800 | 300 |
| TT3 08 | 800 | 400 |

more size to be request to the clients

Door rail (crosspiece for door)

To be fixed on the vertical rail of the door to simplify fixing of cable ducts. Manufactured in 1.2mm sheet steel. Zinc plated passivated with 4.2mmdiameter holes punched in 25mm pinch patten.Pack: 1piece with fixing material



| Code | | Width(mm) |
|------|-----|-----------|
| Mod. | Art | Box |
| WC | 001 | 300 |
| WC | 002 | 400 |
| WC | 003 | 500 |
| WC | 004 | 600 |
| WC | 005 | 800 |



WA 060

Door stop-1

Holds the door at 90° to avoid accidental closing. Manufactured in 2mm and 3mm sheet steel zinc plated passivated can be used on ST boxes till size ST6 820.

Pack of 1 piece with fixing material

Model: WA 060



WA 070

Door stop -2

Holds the door at 90° to avoid accidental closing. Manufactured in 2mm and 3mm sheet steel zinc plated passivated can be used on ST boxes from ST6 820

Pack of 1 piece with fixing material

Model: WA 070



WA 080

WA 080 upright post fixing

Model: WA 080

WA 080 can be used to fix the wall mount enclosure onto upright posts easily, the width of the boxes should be no more than 600mm

Material: sheet steel, galvanized steel

Packing: 2pcs/set per pack(include 4pcs nuts & bolts)

Length of belt 600mm



Accessories of wall mount enclosure



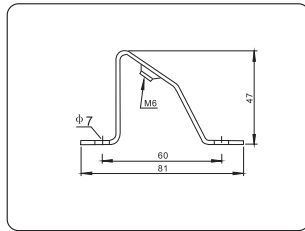
Wall mount bracket : WC 010

Manufactured in 4mm sheet steel zinc plated passivated.
Pack of 4 pieces with fixing material
Model: WC 010
For box model ST,STI,STIP,STIP wall mount enclosure



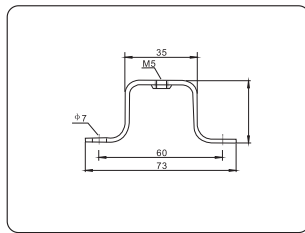
Wall mount bracket: WTC 010

Manufactured in 4mm sheet steel zinc plated passivated
Pack of 4 pieces with fixing material
For the box model TB,TL,TBS,TL-G terminal box
Package:4pcs/set
Model: WTC 010



WL02 45° bracket

WL 02 brackets can be used to slope the DIN rails into 45,
1 pack of 20 pieces
Model: WL 02



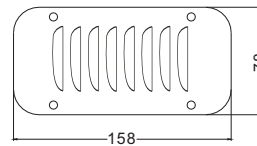
WS02 bracket

WS 02 brackets can be used to upraise the DIN rails,
1 pack of 20 pieces
Model: WS 02

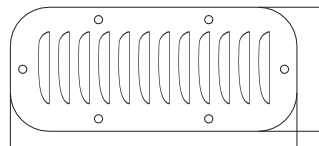


Louver plates(ventilation plate)

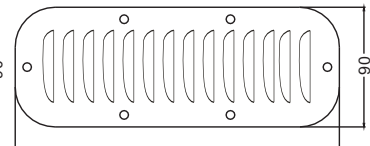
To be fitted on any surface of the enclosure for internal ventilation. Supply include 1 piece louver plate & fixing material,gasket Colour RAL7032 textured finish



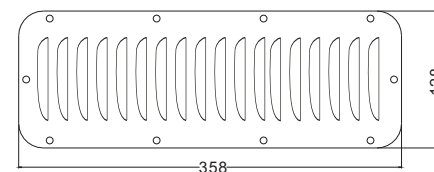
Model: GP-O



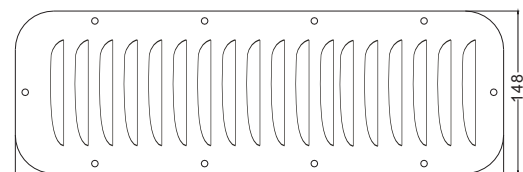
Model: GP-A



Model: GP-B



Model: GP-C



Model: GP-D